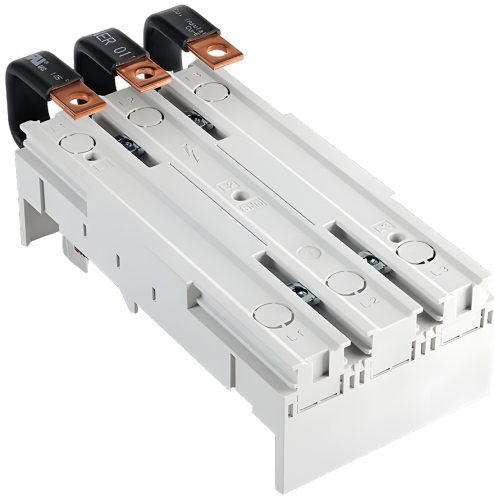


busbar adapter 250 A, 3-pole (32072)



The picture may show a similar product.

Description

Part No.: **32072 000B**

EQUES 60Classic

busbar adapter 250 A, 3-pole
with laminated copper (top)

105 x 200

phase distance 35 mm

connection to the system top

for ABB T3, T4, XT3, XT4 / Eaton NZM2 / Schneider Electric NSX 250 / Siemens 3VA12, 3VA20, 3VA21, 3VA22

for busbars 12, 15, 20, 25, 30 x 5, 10 and section busbars

System

60Classic

Product group 05

Subgroup 36

pack size 1

EAN 4021267320720

ETIM 5.0 EC001531
ETIM 8.0 EC001531
ETIM 10.0 EC001531

Approvals

Standards

IEC 61439-1:2020

CCC approval: no certification required

Technical data

Details IEC

Standards

IEC 61439-1:2020

Electrical data IEC

rated current (IEC): 250 A

rated voltage (IEC) AC: 690 V

rated isolation voltage U_i AC: 800 V

rated surge voltage U_{imp} : 6 kV

power dissipation of the article:

The power dissipation at a typical load of 80 % results to 10.6 W.

(The power dissipation at full load would be 16.5 W.)

Supplementary data IEC

The following values have been verified with tests under certain conditions. Please ask Wöhner for this conditions before designing your panel.

min. permitted operation temperature -40°C

Mechanical data

W x H x D: 105 x 200 x 35

weight: 75.0 kg/100

poles: 3-pole

for busbars: 12, 15, 20, 25, 30 x 5, 10 and section busbars

Material properties

halogen-free: Yes

Application notes

There must be a clearance of at least 10 mm above the article to remove it from the busbar system.
the short-circuit capacity of the combination of adapter and MCCB depends on the MCCB

<https://pim.woehner.de/EN/EN/1000213414>